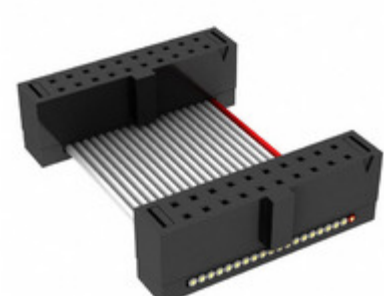


FFSD-10-D-05.12-01-N



Images are for reference only.
See Product Specifications for product details.
Buy FFSD-10-D-05.12-01-N with confidence from
Component-World.HK, 1 Year Warranty



Part Number: [FFSD-10-D-05.12-01-N](#)
Manufacturer: [Samtec, Inc.](#)
Description: .050 X .050 C.L. FEMALE IDC ASSE
Data sheet: [FFSD Series Datasheet](#)
[FFSD-xx-x-xx.xx-01-x-x-zzz Drawing](#)

RoHS Status: Lead free / RoHS Compliant
Ship From: Hong Kong
Shipment Way: DHL/Fedex/TNT/UPS/EMS

[Request For Quotation](#)

PRODUCT PARAMETER

Part Number	FFSD-10-D-05.12-01-N	Manufacturer	Samtec, Inc.
Description	.050 X .050 C.L. FEMALE IDC ASSE	Lead Free Status / RoHS Status	Lead free / RoHS Compliant
Quantity Available	8629 pcs	Data sheet	FFSD Series Datasheet FFSD-xx-x-xx.xx-01-x-x-zzz Drawing
Category	Cable Assemblies	Series	*
Manufacturer Standard Lead Time	3 Weeks	Lead Free Status / RoHS Status	Lead free / RoHS Compliant
Detailed Description	Position Cable Assembly Rectangular		

Component-World.com is a Reliable Stocking Distributor of Electronic Components. We specialize in all Samtec, Inc. series electronic components. We have 8629 pieces of Samtec, Inc. FFSD-10-D-05.12-01-N in stock available now. Request a quote from electronics components distributor at Component-World.com, our sales team will contact you within 24 hours.

RFQ Email: info@Components-World.com

RELATED PRODUCTS

	Part#: FFSD-10-D-05.30-01-N Description: .050 X .050 C.L. FEMALE IDC ASSE	Manufacturers: Samtec, Inc.	RFQ
	Part#: FFSD-10-D-05.20-01-N Description: .050 X .050 C.L. FEMALE IDC ASSE	Manufacturers: Samtec, Inc.	RFQ
	Part#: FFSD-10-D-05.11-01-N-SR Description: .050 X .050 C.L. FEMALE IDC ASSE	Manufacturers: Samtec, Inc.	RFQ
	Part#: FFSD-10-D-05.00-01-N-RW-R Description: .050 X .050 C.L. FEMALE IDC ASSE	Manufacturers: Samtec, Inc.	RFQ
	Part#: FFSD-10-D-05.10-01-N Description: .050 X .050 C.L. FEMALE IDC ASSE	Manufacturers: Samtec, Inc.	RFQ
	Part#: FFSD-10-D-05.09-01-N Description: .050 X .050 C.L. FEMALE IDC ASSE	Manufacturers: Samtec, Inc.	RFQ
	Part#: FFSD-10-D-05.33-01-N-R Description: .050 X .050 C.L. FEMALE IDC ASSE	Manufacturers: Samtec, Inc.	RFQ
	Part#: FFSD-10-D-05.27-01-N Description: .050 X .050 C.L. FEMALE IDC ASSE	Manufacturers: Samtec, Inc.	RFQ
	Part#: FFSD-10-D-05.00-01-S-N-RW Description: .050 X .050 C.L. FEMALE IDC ASSE	Manufacturers: Samtec, Inc.	RFQ
	Part#: FFSD-10-D-05.00-01-N-SR Description: .050 X .050 C.L. FEMALE IDC ASSE	Manufacturers: Samtec, Inc.	RFQ
	Part#: FFSD-10-D-05.25-01-N Description: .050 X .050 C.L. FEMALE IDC ASSE	Manufacturers: Samtec, Inc.	RFQ
	Part#: FFSD-10-D-05.05-01-N Description: .050 X .050 C.L. FEMALE IDC ASSE	Manufacturers: Samtec, Inc.	RFQ
	Part#: FFSD-10-D-05.08-01-N Description: .050 X .050 C.L. FEMALE IDC ASSE	Manufacturers: Samtec, Inc.	RFQ
	Part#: FFSD-10-D-05.00-01-S-N Description: .050 X .050 C.L. FEMALE IDC ASSE	Manufacturers: Samtec, Inc.	RFQ
	Part#: FFSD-10-D-05.25-01-N-R Description: .050 X .050 C.L. FEMALE IDC ASSE	Manufacturers: Samtec, Inc.	RFQ
	Part#: FFSD-10-D-05.01-01-N Description: .050 X .050 C.L. FEMALE IDC ASSE	Manufacturers: Samtec, Inc.	RFQ
	Part#: FFSD-10-D-05.31-01-N Description: .050 X .050 C.L. FEMALE IDC ASSE	Manufacturers: Samtec, Inc.	RFQ
	Part#: FFSD-10-D-05.30-01-N-RN2 Description: .050 X .050 C.L. FEMALE IDC ASSE	Manufacturers: Samtec, Inc.	RFQ
	Part#: FFSD-10-D-05.32-01-N Description: .050 X .050 C.L. FEMALE IDC ASSE	Manufacturers: Samtec, Inc.	RFQ
	Part#: FFSD-10-D-05.12-01-N-R Description: .050 X .050 C.L. FEMALE IDC ASSE	Manufacturers: Samtec, Inc.	RFQ

Related keywords for FFSD-10-D-05.12-01-N

Samtec, Inc. FFSD-10-D-05.12-01-N	FFSD-10-D-05.12-01-N distributor	FFSD-10-D-05.12-01-N supplier	FFSD-10-D-05.12-01-N price
FFSD-10-D-05.12-01-N download datasheet	FFSD-10-D-05.12-01-N datasheet	FFSD-10-D-05.12-01-N stock	buy FFSD-10-D-05.12-01-N
Samtec, Inc. FFSD-10-D-05.12-01-N	Samtec Inc. FFSD-10-D-05.12-01-N		